



Cuyahoga County Regional Jail Assessment Project

Final Report Summary

July 2014

Public Financial Management, Inc.



Agenda

- **Overview of PFM and Project**
- **Summary of Primary Findings**
- **Operational Capacity**
- **Operational Information**
- **Personnel**
- **Budget**
- **Questions & Answers**
- **Definitions**



Overview of PFM and Project

- PFM is the nation's leading provider of independent financial advisory services and management/budget consulting services to state and local governments. PFM has over 30 offices and about 450 employees across the United States; including a Cleveland office.
- PFM worked with the County and its jails to design and disseminate an electronic survey to capture critical information to assist the County in assessing regional jail consolidation.
- PFM analyzed and synthesized the data in a report to the County.
- The information contained in this report is reflective of the best available information received from responding jurisdictions. Certain data that were not received or not able to be confirmed may warrant future discussion as the County and municipalities continue to discuss jail regionalization.



Project Timeline

2013

- ✓ Kick-off Meeting
- ✓ Development assessment instrument
- ✓ Initial Community Meetings
- ✓ Develop and field on-line survey tool
- ✓ Follow-up on data collection

2014

- ✓ Second series of community meetings
- ✓ Follow-up on data collection
- ✓ Preliminary analysis of survey results
- ✓ Mid-project update
- ✓ Develop report and present to County



Definitions

- **Full service jail:** A local confinement facility used primarily to detain adults for more than one hundred twenty hours.
- **Non-full service jail:** A temporary holding facility or any other local jail facility not meeting the criteria to be considered a full service jail.
- **Operational status:**
 - **Open and Active** – A facility that is open and currently housing inmates.
 - **Open and Inactive** – A facility that is open, but is not currently housing inmates.
 - **Closed** – A facility that has been closed and is non-operational.
- **Average daily population (ADP):** The average number of inmates in jail on a given day. ADP can be calculated using monthly or daily jail population statistics.

Monthly ADP calculation:

(Jan. + Feb. + Mar. + Apr. + May + June + July + Aug. + Sep + Oct + Nov + Dec.)/12 months

Daily ADP calculation:

(Jan 1 + Jan 2 + Jan 3 + Jan 4 + ... + Dec 29 + Dec 30 + Dec 31)/365



Definitions

- **Average length of stay:** The average duration an inmate's time in jail.
- **Average daily cost per inmate:** The average cost of housing a single inmate for one day.
Calculation: [(Total Jail Expenditures) / (Average Daily Population) / 365]
- **Average meal cost per inmate:** The average cost of a single meal for one inmate.
Calculation: [(Total Food Costs) / (Average Daily Population) / 365 / 3]
- **Average medical cost per inmate per day:** The average daily medical care cost for a single inmate.
Calculation: [(Total Medical Care Costs) / (Average Daily Population) / 365]
- **Full-time jail employee:** An employee who spends 75 percent or more of their work time supervising inmates.



Summary of Primary Findings

- **Ample bed space appears to exist to house inmate populations** if the County, in coordination with a sufficient number of municipalities, moves forward with a regional jail model.
- **Current full service and non-full service facilities exist throughout the County in various geographic areas.**
- **Regional jail operations may be less costly than current operations for many full service jails**, given high fixed costs and relatively low inmate populations.
- **Non-full service jails may also find regional operations less costly** than current operations which require them to send inmates to be housed in other jurisdictions' jails.
- **Jurisdictions who have limited prisoners and pay other jurisdictions to house their inmates may not achieve significant fiscal savings.**
- **Jurisdictions that house a significant number of inmates from other jurisdictions may be reluctant to forego revenues.**
- **A regional jail model could increase staffing availability for core police department activities without increasing costs.**
- **The County may be able to achieve economies of scale in food and medical services.**



Summary of Primary Findings

2013 Budgeted Expenditures of Responding Jails

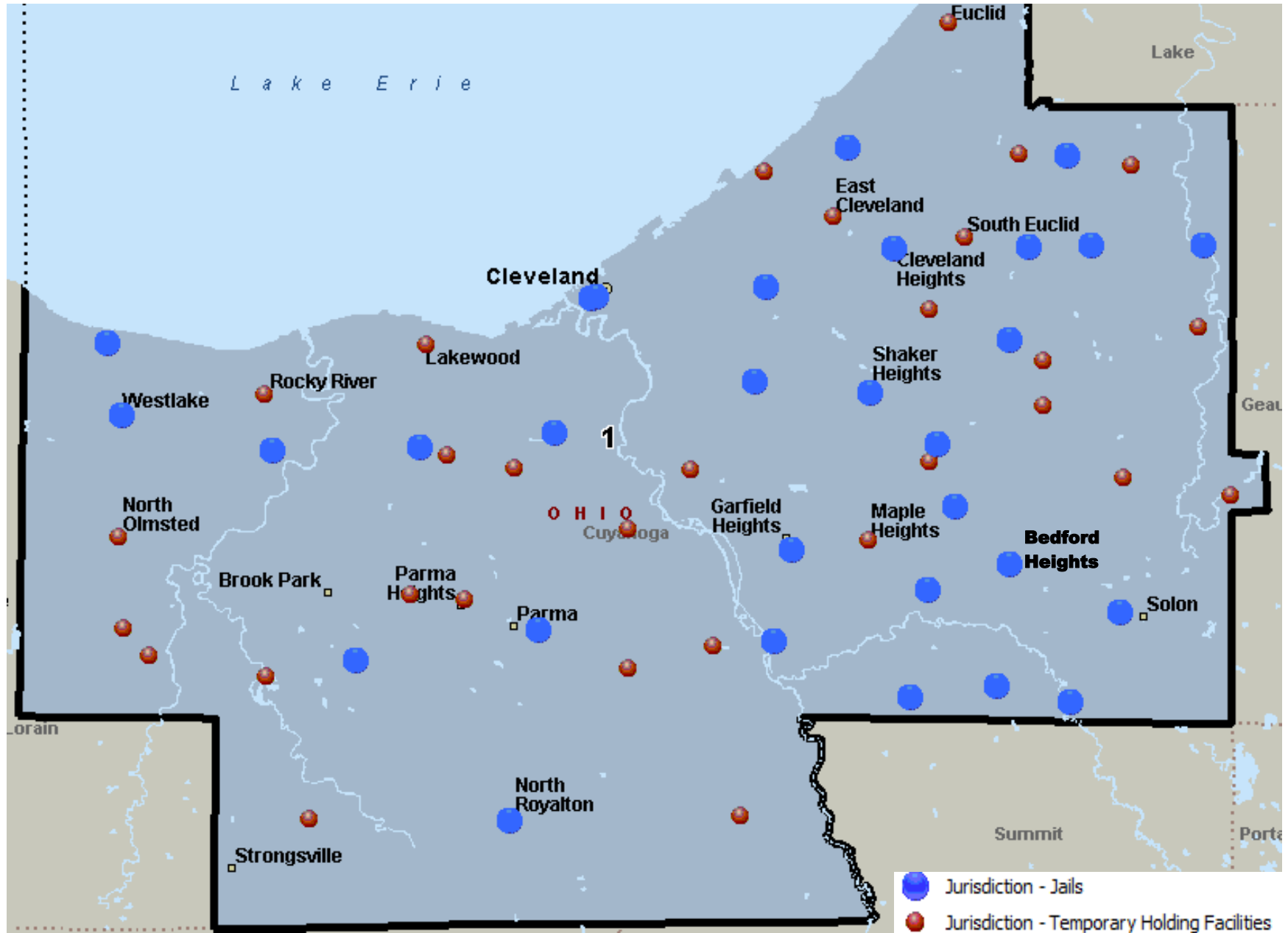
	Budgeted Expenditures	Percent of All Jail Expenditures
Total Expenditures (All Jurisdictions)	\$87,959,128	-
Cuyahoga County Expenditures	\$64,100,000	72.9%
Cleveland Expenditures	\$14,914,283	17.0%
All Other Expenditures	\$8,944,845	10.2%

2013 Budgeted Revenues of Responding Jails

	Budgeted Revenues	Percent of All Jail Revenues
Total Budgeted Revenues (All Jurisdictions)	\$3,037,738	-
Bedford Heights Budgeted Revenues	\$2,094,800	69.0%
Solon Budgeted Revenues	\$265,000	8.7%
North Royalton Budgeted Revenues	\$180,000	5.9%
Broadview Heights Budgeted Revenues	\$113,667	3.7%
Strongsville Budgeted Revenues	\$108,169	3.6%
All Other Budgeted Revenues	\$276,102	9.1%



Geographic Distribution of Jails



Operational Capacity

- All 59 jurisdictions responded to the survey.
- 52 of the 59 jurisdictions' jails are part of a police department.
- There are 64 jails in the 59 jurisdictions.
- 24 “open and active” jails are full service jails (120 hours and above), 27 open and active jails are non-full service jails (less than 120 hours).

	<u>#</u>	<u>% of Total</u>
Total Jails	64	100%
<i>Full Service (Open and Active)</i>	<i>24*</i>	<i>37.5%</i>
<i>Non-Full Service (Open and Active)</i>	<i>27</i>	<i>42.2%</i>
<i>Open and Inactive</i>	<i>7</i>	<i>10.9%</i>
<i>Other (i.e. no facility or incomplete data)</i>	<i>5</i>	<i>7.8%</i>
<i>Closed</i>	<i>1</i>	<i>1.9%</i>

*Does not include the five “open and inactive” Cleveland district jails and the closed Gates Mills Village jail. The inclusion of those 6 jails totals 30 “full service” jails.



Operational Capacity

- Total countywide rated bed capacity is 2,761 beds. Combined, Cuyahoga County Jail and jails in the City of Cleveland account for 79% of all rated bed capacity.
 - 1,765 at the Cuyahoga County jail (64% of total)
 - 412 in the City of Cleveland jails (15% of total)
 - 584 beds throughout the rest of the County (21% of total)
- Seven other jails have a rated capacity of 20 or more beds (287 beds total):
 - Bedford Heights (126)
 - Euclid (43)
 - Parma (26)
 - Solon (26)
 - Strongsville (24)
 - East Cleveland (22)
 - Brooklyn (20)



Operational Capacity

- For comparative and analytical purposes the PFM Team categorized jurisdictions into three groups using the size of each jurisdiction's rated bed space.
 - **Group A:** jail facilities with rated bed capacities of 20 beds or more.
 - **Group B:** jail facilities with rated bed capacities between 10 and 19 beds.
 - **Group C:** jail facilities with rated bed capacities of less than 10 beds.
 - **No Group:** jurisdictions that do not have a jail or data are incomplete.

Jail Groups – High-Level Data

Group	# of Jails	# of Full Service Jails	Rated Bed Capacity	# of Cells	# of Cells that Lock	# of ADA Compliant Cells
A	13	10	2,430	1,516	1,516	51
B	17	13	220	191	189	51
C*	26	7	111	126	123	19
TOTAL	56	30**	2,761	1,833	1,828	121

No Group	8
-----------------	----------

*The Gates Mills Village jail closed in May 2013. The facility is listed among Group C jails because the physical facility remains.

**Includes the five "open and inactive" Cleveland District jails and the closed Gates Mills Village jail.



Operational Capacity

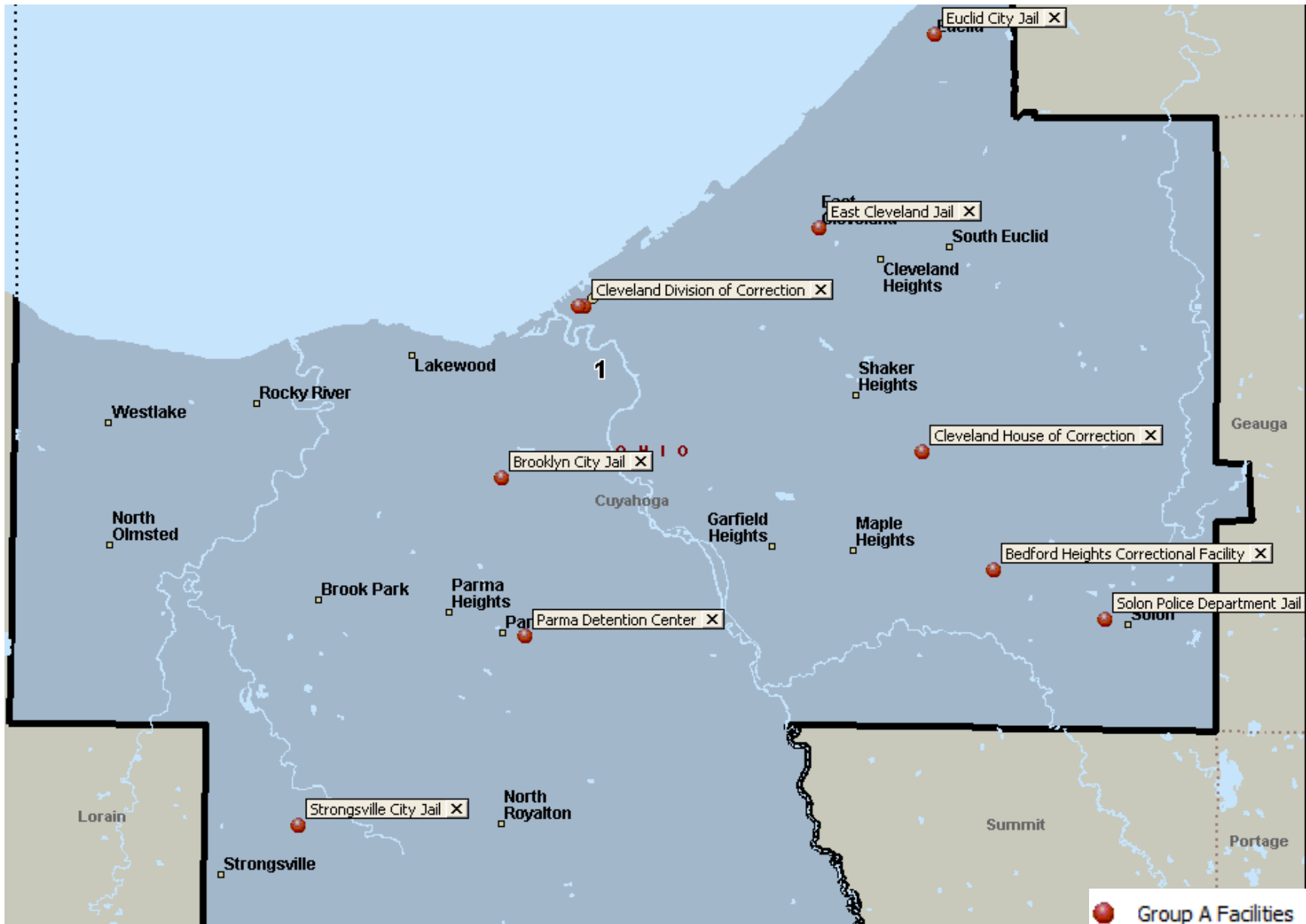
Group A Jails (20 or more beds)*

Group	Jail	Full Service	Rated Bed Capacity	# of Cells	# of Cells that Lock	# of ADA Compliant Cells	Laundry	Kitchen
A	Cuyahoga County	X	1,765	1,256	1,256	30	X	X
A	Cleveland (HOC)	X	268	16	16	0	X	X
A	Cleveland (CPU)	X	50	50	50	0		
A	Cleveland (2 nd Dist.)	X	20	20	20	0		
A	Cleveland (3 rd Dist.)	X	20	20	20	0		
A	Cleveland (5 th Dist.)	X	20	20	20	0		
A	Bedford Heights	X	126	7	7	0	X	X
A	Euclid	X	43	43	43	0	X	X
A	Parma	X	26	14	14	2	X	
A	Solon	X	26	14	14	14	X	X
A	Strongsville		24	28	28	5	X	X
A	East Cleveland		22	18	18	0	X	
A	Brooklyn		20	10	10	0	X	X
TOTAL	13	10	2,430	1,516	1,516	51	9	7
Total w/o County and City Jails	7	4	287	134	134	21	7	5

* Cleveland's 5 district jails are "open and inactive".



Geographic Distribution of Group A Jail Facilities



Note: Does not include the 3 City of Cleveland Group A jails that "open and inactive." Cuyahoga County's jail is located in downtown Cleveland.



Operational Capacity

Group B Jails (10-19 beds)

Group	Jail	Full Service	Rated Bed Capacity	# of Cells	# of Cells that Lock	# of ADA Compliant Cells	Laundry	Kitchen
B	Cleveland (1 st Dist.)	X	17	17	17	0		
B	Cleveland (4 th Dist.)	X	17	17	17	0		
B	Garfield Heights	X	16	9	9	9	X	X
B	Lakewood		16	11	11	0		X
B	Bedford	X	14	10	10	10	X	
B	Beachwood	X	13	15	15	0	X	X
B	Cleveland Heights	X	13	13	13	13		
B	Westlake	X	13	18	18	18	X	
B	Mayfield Heights	X	12	10	10	0		
B	North Randall	X	12	6	6	0	X	
B	North Royalton	X	12	10	10	0	X	X
B	Warrensville Heights		12	5	5	0	X	
B	Brook Park		11	11	11	0		X
B	Shaker Heights	X	11	15	13	0		X
B	Valley View	X	11	8	8	1	X	X
B	Broadview Heights	X	10	5	5	0	X	X
B	Maple Heights		10	11	11	0	X	X
Total	17	13	220	191	189	51	10	9
Total w/o City	15	11	186	157	155	51	10	9



Operational Capacity

Group C Jails (less than 10 beds)*

Group	Jail	Full Service	Rated Bed Capacity	# of Cells	# of Cells that Lock	# of ADA Compliant Cells	Laundry	Kitchen
C	North Olmsted		9	9	9	0		
C	Berea		8	6	6	0		
C	Cuyahoga Heights		8	6	6	2	X	X
C	Richmond Heights		8	10	10	8		
C	South Euclid		8	10	10	0		
C	Middleburg Heights	X	7	7	7	1	X	
C	Bay Village	X	6	8	8	2		
C	Brecksville		6	5	5	0		X
C	Fairview Park	X	6	6	6	0	X	
C	Highland Heights	X	6	9	9	0		
C	Independence		6	9	9	0	X	
C	Parma Heights		6	4	4	0		
C	Village of Bratenahl		5	2	2	0	X	
C	Pepper Pike		4	3	3	0		
C	Brooklyn Heights		3	3	3	1	X	X
C	Gates Mills Village	Closed May 2013	3	0	0	0		
C	Olmsted Falls		3	3	3	0		
C	Walton Hills	X	3	3	0	3	X	X
C	Chagrin Falls		2	2	2	0		
C	Hunting Valley		1	1	1	1		
C	Lyndhurst	X	1	6	6	0		
C	Mayfield Village		1	1	1	1		
C	Moreland Hills		1	1	1	0	X	
C	Linndale		N/A	1	1	0		
C	Rocky River		N/A	6	6	0		
C	University Heights		N/A	5	5	0		
Total	26	7	111	126	123	19	8	4

* Gates Mills' jail is a full service facility, but closed in May 2013. Woodmere reported having no rated bed capacity, but having laundry and kitchen facilities.



Operational Information

- In order for the County and its municipalities to understand potential costs and savings from regionalizing jail operations, it will be necessary to confirm the baseline jail operations for each jurisdiction.
- If regional jail operations are implemented, the longer-term sentenced inmates currently serving sentences in full-service municipal jails would drive the potential costs and space the County would absorb.
- To provide an estimate of the potential operational impact and cost impact of regional consolidation, most data is reported for full service jails – which would drive much of the population and cost – and non-full service jails.
 - 24 jurisdictions reported managing a full service jail or jails.
 - 35 jurisdictions reported managing a non-full service jail or no jail at all.



Operational Information

Full Service Jails - Overview

Jurisdiction	Facility	Full Service	Operational Status	Rated Bed Capacity	ADP 2013	FY2013 Total Budgeted Expenditures	Houses Inmates from other jurisdictions
Cuyahoga County		X	Open and Active	1,765	2,041	\$64,100,000	X
Cleveland	HOC	X	Open and Active	268	270	\$14,914,283	
Cleveland	CPU	X	Open and Active	50	Included Above	Included in above	
Cleveland	1-5th Districts	X	Open and Inactive	94	0	N/A	
Bedford Heights		X	Open and Active	126	66.49	\$2,182,000	X
Euclid		X	Open and Active	43	28*	\$65,000	
Parma		X	Open and Active	26	21.80	\$1,449,876	X
Solon		X	Open and Active	26	16.40	\$1,066,000	X
Garfield Heights		X	Open and Active	16	14.40	\$442,463	
Bedford		X	Open and Active	14	4	\$152,937	X
Beachwood		X	Open and Active	13	1.98	N/A	X
Cleveland Heights		X	Open and Active	13	9.12	\$90,000	X
Westlake		X	Open and Active	13	5.78	\$236,700	X
Mayfield Heights		X	Open and Active	12	1.96	\$30,000	
North Randall		X	Open and Active	12	1.08	\$1,000	
North Royalton		X	Open and Active	12	9.16	\$899,958	X
Shaker Heights		X	Open and Active	11	7.20	\$373,878	
Valley View		X	Open and Active	11	0.32	\$125,000	X
Broadview Heights		X	Open and Active	10	2.61	\$285,116	X
Middleburg Heights		X	Open and Active	7	2.91	\$28,622	
Bay Village		X	Open and Active	6	0.95	\$17,360	X
Fairview Park		X	Open and Active	6	N/A	\$19,400	X
Highland Heights		X	Open and Active	6	1.18	\$15,644	X
Gates Mills Village		X	Closed	3	-	-	
Walton Hills		X	Open and Active	3	0	\$9,390	
Lyndhurst		X	Open and Active	1	2.13	\$25,000	X
Total		30*		2,567	2,508	\$86,529,627	15

*The County and Euclid are currently in the process of consolidating operations. In May 2013, Euclid's jail became a 6 hour holding facility. In 2012, Euclid's jail was a full service jail and had an ADP of 48. The jail's ADP for the first quarter of 2013 (when it was a full service jail) was 28. This data point is used in the table above.

**Cleveland's district jails (1st through 5th) are included in the total facility count.



Operational Information

ADP

- In 2013, the reported ADP among all jails in Cuyahoga County was 2,601.
- Excluding Cuyahoga County Jail from ADP calculations, the remaining ADP was 560 inmates.
- Excluding Cuyahoga County Jail and Cleveland jails, the remaining jails had an ADP of 290 inmates.
 - 7 jails accounted for 185 of the 290 inmates (63.8 percent)

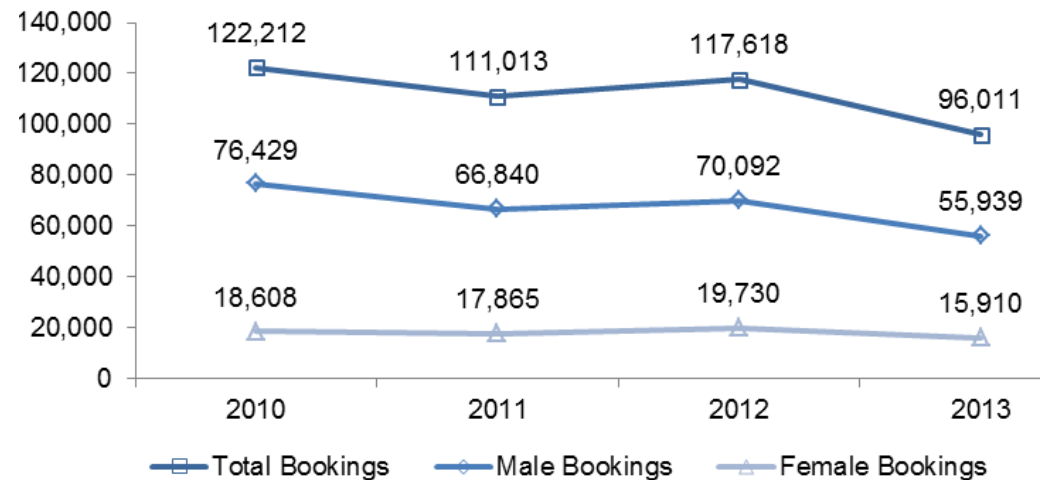
2013 ADP	
Total ADP	2,601.0
<i>Cuyahoga County</i>	<i>2,041.0</i>
<i>Cleveland</i>	<i>270.0</i>
Remainder	290.0
<i>Bedford Heights</i>	<i>66.5</i>
<i>Euclid</i>	<i>28.0</i>
<i>Maple Heights</i>	<i>23.0</i>
<i>Parma</i>	<i>21.8</i>
<i>Solon</i>	<i>16.4</i>
<i>East Cleveland</i>	<i>15.0</i>
<i>Garfield Heights</i>	<i>14.4</i>
<i>All others</i>	<i>104.9</i>



Operational Information

Bookings

- The top six jurisdictions by reported bookings were Cleveland, Euclid, Bedford Heights, East Cleveland, Maple Heights and Parma.
- Together, these six jurisdictions totaled 49,344 bookings in 2013, which accounted for 64.1 percent of all municipal bookings (excluding the County's 19,072 bookings).
- When excluding Cleveland, the remaining five jurisdictions accounted for 93.1 percent of the total bookings in remaining municipalities.
- These jurisdictions are the most likely to use a regional jail system which could be important to location decisions of regional satellite jails.



	Total Bookings (2010)	% of Total Bookings (2010)	Total Bookings (2013)	% of Total Bookings (2013)	Change from 2010 (#)	Change from 2010 (%)
All Responding Jurisdictions	122,212	-	96,011	-	(26,201)	(21.4%)
<i>Cuyahoga County</i>	<i>19,032</i>	<i>15.6%</i>	<i>19,072</i>	<i>19.9%</i>	<i>40</i>	<i>0.2%</i>
<i>Cleveland</i>	<i>26,787</i>	<i>21.9%</i>	<i>23,935</i>	<i>24.9%</i>	<i>(2,852)</i>	<i>(10.6%)</i>
<i>East Cleveland</i>	<i>14,949</i>	<i>12.2%</i>	<i>3,781</i>	<i>3.9%</i>	<i>(11,168)</i>	<i>(74.7%)</i>
<i>Euclid</i>	<i>20,957</i>	<i>17.1%</i>	<i>10,076</i>	<i>10.5%</i>	<i>(10,881)</i>	<i>(51.9%)</i>
<i>All other Responding Jails</i>	<i>40,487</i>	<i>33.1%</i>	<i>39,147</i>	<i>40.8%</i>	<i>(1,340)</i>	<i>(3.3%)</i>



Operational Information

Potential Fiscal Impacts of Regional Jail Operations

- Regional jail operations may be less costly than current operations for many full service jails.
- Jurisdictions that pay others to house their inmates and also send a very low number of inmates per year to be housed in other locations may not achieve significant fiscal savings.
- Jurisdictions that house a significant number of inmates from other jurisdictions may be reluctant to forego revenues.
- Non-full service jails may find regional operations less costly than current operations that require them to send inmates to be housed at other jails.
- **If the County can house inmates at a lesser per diem rate, manage population to keep sentenced individuals out of jail, or lessen lengths of stay many jurisdictions could see a decrease in costs for jail services.**



Personnel

Number and Cost

- In 2013, among all responding jails a total of 976 staff members (815 full-time staff members and 161 part-time staff members) cost jails approximately \$55.5 million (approximately 63 percent of all reported expenditures of \$88.0 million).
 - Nearly 90 percent of total jail staff in responding jurisdictions were State of Ohio certified correctional officers.
- Cuyahoga County Jail's personnel expenses were \$40 million. In remaining jurisdictions, nearly 85 percent of all reported personnel expenditures came from Cleveland, Euclid, Bedford Heights, Parma, Solon, and North Royalton.

2013 Personnel Expenditures	
Total Expenditures (All Jurisdictions)	\$87,959,128
Total Personnel Expenditures (All Jurisdictions)	\$55,480,596
Cuyahoga County Personnel Expenditures	\$40,000,000
Cleveland Personnel Expenditures	\$7,361,827
All Other Personnel Expenditures	\$8,118,769

- Non-County Jail, non-City jail personnel expenditures were \$8.1 million – the majority of which came from 5 jails (Euclid, Bedford Heights, Solon, Parma, North Royalton).



Personnel

Collective Bargaining Agreements

- The various provisions of collective bargaining agreements should be reviewed prior to regionalization so that any terms or implications are fully understood prior to taking any action.

Ending date of CBA (Year)	Jurisdiction(s)
2012	Cuyahoga County
2013	Bedford Heights Cleveland Westlake
2014	Broadview Heights Euclid Garfield Heights Maple Heights North Olmsted Parma
2015	East Cleveland Solon Strongsville
2016	Brooklyn
2017	Lakewood
Not Provided	North Royalton



Personnel

Use of Police Patrol and/or Dispatch

- A sizable number of jurisdictions use patrol and/or dispatch staff to provide some level of jail-related services. A regional jail model would increase staffing availability to those police departments without any associated additional costs, reallocating time previously spent on jail-related duties to additional patrol and dispatch duties.

Jurisdiction	Most of the time	Infrequent Occasions	Only at night	Other
Bay Village Police	X			
Bedford			X	
Bedford Heights				X
Broadview Heights	X			
Cleveland Heights	X			
Fairview Park	X			
Highland Heights	X			
Lyndhurst	X			
Mayfield Heights	X			
Middleburg Heights				X
North Randall	X			
Parma		X		
Shaker Heights				X
Valley View		X		
Walton Hills				X
Westlake				X
Total	8	2	1	5



Budget

Expenditures and Revenues - Summary

- In 2013, the total budgeted expenditures of all responding jails (full service and non-full service) were \$88.0 million.
- In 2013, the total budgeted expenditures of all full service jails in Cuyahoga County equaled \$86.5 million.
 - The County’s Jail and the City of Cleveland’s jails accounted for the majority of full service jail expenditures, representing a combined \$79.0 million in expenditures.
 - All non-County and non-City full service jails combined for total expenditures of \$7.5 million and, of this population, only Bedford Heights had expenditures of more than \$2 million.
- Only one jail, Bedford Heights, came close to operating its jail at a net zero fiscal impact (revenues equal to expenditures), though some jurisdictions received significant revenues to help offset a portion of jail expenditures.

	Budgeted Expenditures	% of All Jail Expenditures
Total Budgeted Expenditures (All Jurisdictions)	\$87,959,128	-
Cuyahoga County Expenditures	\$64,100,000	72.9%
Cleveland Expenditures	\$14,914,283	17.0%
All Other Expenditures	\$8,944,845	10.2%

	Budgeted Revenues	% of All Jail Revenues
Total Budgeted Revenues (All Jurisdictions)	\$3,037,738	-
Bedford Heights Budgeted Revenues	\$2,094,800	69.0%
Solon Budgeted Revenues	\$265,000	8.7%
North Royalton Budgeted Revenues	\$180,000	5.9%
Broadview Heights Budgeted Revenues	\$113,667	3.7%
Strongsville Budgeted Revenues	\$108,169	3.6%
All Other Budgeted Revenues	\$276,102	9.1%



Budget

Full Service Jails – Overview

Jurisdiction	FY13 Budgeted Expenditures	FY 13 Budgeted Revenues	Net Cost
Bay Village	\$17,360	\$5,250	\$12,110
Beachwood	N/A	\$0	N/A
Bedford	\$152,937	\$41,802	\$111,135
Bedford Heights	\$2,182,000	\$2,094,800	\$87,200
Broadview Heights	\$285,116	\$113,667	\$171,449
Cleveland	\$14,914,283	\$0	\$14,914,283
Cleveland Heights	\$90,000	\$0	\$90,000
Cuyahoga County	\$64,100,000	\$0	\$64,100,000
Euclid	\$65,000	\$0	\$65,000
Fairview Park	\$19,400	\$600	\$18,800
Garfield Heights	\$442,463	\$75,000	\$367,463
Highland Heights	\$15,644	\$0	\$15,644
Lyndhurst	\$25,000	\$0	\$25,000
Mayfield Heights	\$30,000	\$0	\$30,000
Middleburg Heights	\$28,622	\$14,025	\$14,597
North Randall	\$1,000	\$1,000	\$0
North Royalton	\$899,958	\$180,000	\$719,958
Parma	\$1,449,876	\$53,869	\$1,396,007
Shaker Heights	\$373,878	\$450	\$373,428
Solon	\$1,066,000	\$265,000	\$801,000
Valley View	\$125,000	\$0	\$125,000
Walton Hills	\$9,390	\$9,106	\$284
Westlake	\$236,700	\$0	\$236,700
Total	\$86,529,627	\$2,854,569	\$83,857,058



Budget

Full Service Jails – Expenditures

- In 2013, the total budgeted expenditures of all responding jails (full service and non-full service) were \$88.0 million.
 - Full service jails: \$86.5 million in expenditures; non-full service jails: \$1.4 million in expenditures
 - The County's Jail and the City of Cleveland's jails accounted for the majority of full service jail expenditures, representing a combined \$79.0 million in expenditures.

Jurisdiction (Full Service Jails)	FY 10 Expenditures	FY 11 Expenditures	FY12 Expenditures	FY13 Budgeted Expenditures
Bay Village	\$7,604	\$9,821	\$14,665	\$17,360
Beachwood	N/A	N/A	N/A	N/A
Bedford	\$145,128	\$145,721	\$129,113	\$152,937
Bedford Heights	\$2,294,903	\$2,250,787	\$2,077,437	\$2,182,000
Broadview Heights	\$259,185	\$249,313	\$256,785	\$285,116
Cleveland	\$14,615,490	\$14,051,324	\$13,082,190	\$14,914,283
Cleveland Heights	\$109,602	\$86,333	\$89,222	\$90,000
Cuyahoga County	N/A	N/A	N/A	\$64,100,000
Euclid	\$1,777,300	\$1,639,521	\$1,643,597	\$65,000
Fairview Park	\$13,750	\$21,300	\$15,450	\$19,400
Garfield Heights	\$591,396	\$415,996	\$410,443	\$442,463
Gates Mills Village	\$0	\$0	\$0	\$0
Highland Heights	\$10,300	\$11,500	\$12,500	\$15,644
Lyndhurst	\$12,743	\$12,292	\$19,841	\$25,000
Mayfield Heights	\$20,877	\$27,520	\$26,222	\$30,000
Middleburg Heights	\$49,434	\$21,500	\$33,581	\$28,622
North Randall	\$1,000	\$1,000	\$1,000	\$1,000
North Royalton	\$732,901	\$935,839	\$1,002,469	\$899,958
Parma	\$1,404,139	\$1,430,723	\$1,477,186	\$1,449,876
Shaker Heights	347,363	353,415	314,294	\$373,878
Solon	\$830,000	\$748,000	\$842,000	\$1,066,000
Valley View	\$133,367	\$131,000	\$127,025	\$125,000
Walton Hills	\$6,720	\$5,283	\$10,220	\$9,390
Westlake	\$229,352	\$241,624	\$232,750	\$236,700
<small>Excludes County for consistency.</small>				
Total	\$23,592,555	\$22,789,813	\$21,817,991	\$22,429,627*



Budget

Full Service Jails – Revenues

- In 2013, the total budgeted revenues of all responding jails (full service and non-full service) were \$3.0 million.
 - Full service jails: \$2.9 million in revenues; non-full service jails: \$0.2 million in revenues
- Revenues were primarily generated from fees charged to other jurisdictions for housing inmates.

Jurisdiction (Full Service Jails)	FY10 Actual Revenues	FY11 Actual Revenues	FY12 Actual Revenues	FY13 Budgeted Revenues
Bay Village	\$3,576	\$6,633	\$6,133	\$5,250
Beachwood	N/A	N/A	N/A	\$0
Bedford	N/A	\$1,265	\$47,392	\$41,802
Bedford Heights	\$2,477,653	\$2,628,801	\$2,369,115	\$2,094,800
Broadview Heights	\$120,503	\$92,637	\$121,843	\$113,667
Cleveland	N/A	N/A	N/A	\$0
Cleveland Heights	N/A	N/A	N/A	\$0
Cuyahoga County	N/A	N/A	N/A	\$0
Euclid	\$711,459	\$436,621	\$396,443	\$0
Fairview Park	\$500	\$500	\$500	\$600
Garfield Heights	\$30,124	N/A	\$78,800	\$75,000
Gates Mills Village	N/A	N/A	N/A	\$0
Highland Heights	N/A	N/A	N/A	\$0
Lyndhurst	N/A	N/A	N/A	\$0
Mayfield Heights	N/A	N/A	N/A	\$0
Middleburg Heights	\$13,348	N/A	\$10,937	\$14,025
North Randall	\$1,000	\$1,000	\$1,000	\$1,000
North Royalton	\$188,427	\$179,662	\$176,663	\$180,000
Parma	\$33,820	\$17,355	\$72,294	\$53,869
Shaker Heights	\$4,334	\$261	\$1,120	\$450
Solon	\$131,000	\$158,000	\$305,000	\$265,000
Valley View	N/A	N/A	N/A	\$0
Walton Hills	N/A	N/A	N/A	\$9,106
Westlake	N/A	N/A	N/A	N/A
Total	\$3,715,744	\$3,522,735	\$3,587,240	\$2,854,569



Budget

Full Service Jails – Food

- Jail food costs are directly related to inmate population. Food costs would be expected to decrease if jail population declines and increase if jail population rises.
- In 2013, 32 jurisdictions contracted with vendors for jail food services, and 11 jurisdictions reported that they provided food services with their own staff.
- Among the 32 jurisdictions, 25 reported average costs per meal per inmate of \$7.00 or less. Seven jurisdictions reported an average cost per meal per inmate of more than \$7.00.
- Eleven jurisdictions provided food services in-house using their own staff. Most jurisdictions that provided food services in-house did so at a cost per inmate per meal of less than \$4.00 dollars. Cuyahoga County jail was able to provide a meal for \$0.79 per inmate.



Budget

Full Service Jails – Medical

- Medical costs are directly related to inmate population. Medical costs would be expected to decrease if jail population declines and increase if jail population rises.
- Taken together, the budgeted medical expenditures for Cuyahoga County's Jail and Cleveland's jails were \$10.1 million of the total \$10.4 million of budgeted medical expenditures among jails that contracted for medical services.
- Cuyahoga County jail had an average medical cost per inmate per day of \$9.40.
- 21 jurisdictions contracted out their medical service. Of those jails contracting for medical service:
 - 14 had an average medical cost per inmate per day of \$10.00 or less.
 - 4 had an average medical cost per inmate that was between \$10.00 and \$20.00.
 - 3 had an average medical cost per inmate per day that was more than \$20.00.
- Some municipal jails provided medical service in-house with their own staff. Eight of the 15 municipalities that provided medical services in-house, did so for a cost of less than \$5.00 per inmate per day.



Questions & Answers

